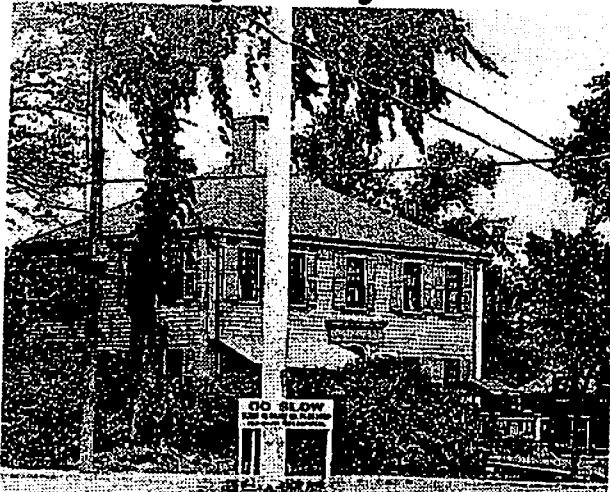


Historic Preservation



Lost Duxbury Slide Presentation by Tony Kelso



Hall's Corner Tavern where Exxon station is now. It is part of "Lost Duxbury".

Don't miss the first lecture of the Sarah Wingate Taylor Fall Lecture Series which will be held on Tuesday, Sept. 9. Tony Kelso's presentation titled, *Lost Duxbury*, will make us aware of some important structures that have been lost to the community forever. Are we in danger of losing more of our heritage? Tony will present slides of some buildings that are no longer part of our neighborhoods and whose loss has changed our viewscapes forever.



When building was in process of being moved.

Duxbury Clipper, Wednesday, September 3, 1997

Tony Kelso, historian and educator, is manager of the Education Department for Plimoth Plantation. He was chairman of the society's date board committee for many years, served on the publications committee and was a member of the Executive Committee.

Please note that the lecture will take place at the Ellison Center for the Arts starting with refreshments at 7:30 followed by the presentation at 8 pm. A donation of \$5 per person is suggested.